



THE ARCTIC TRIPLE

- Navigation map:
Lofoten Stage Run 130KM

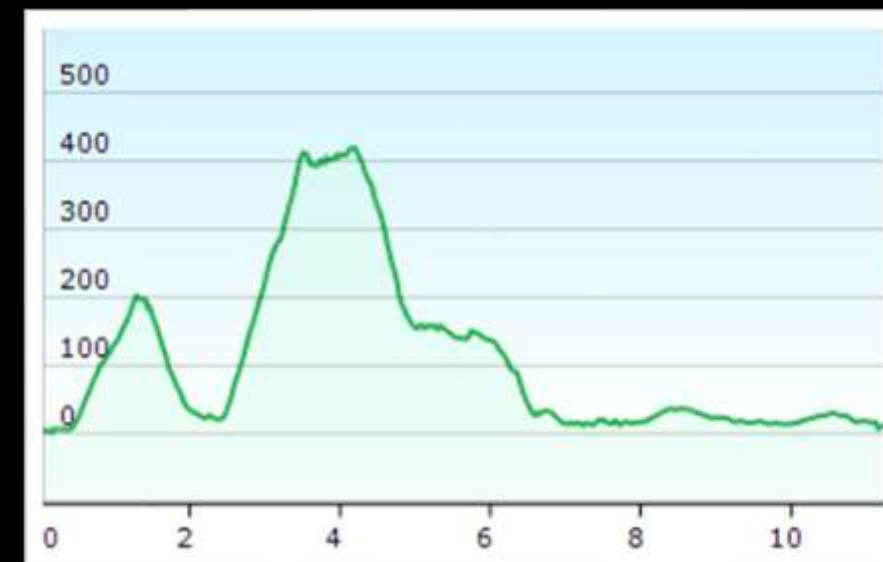
Lofoten Stage Run 130KM



THE ARCTIC TRIPLE

Stage 1

Kjerkfjorden - Selfjorden
Distance: 11 km
Elevation: 750 m



START
Stage 1
Kjerkfjorden, Reine
39KM



Part 1

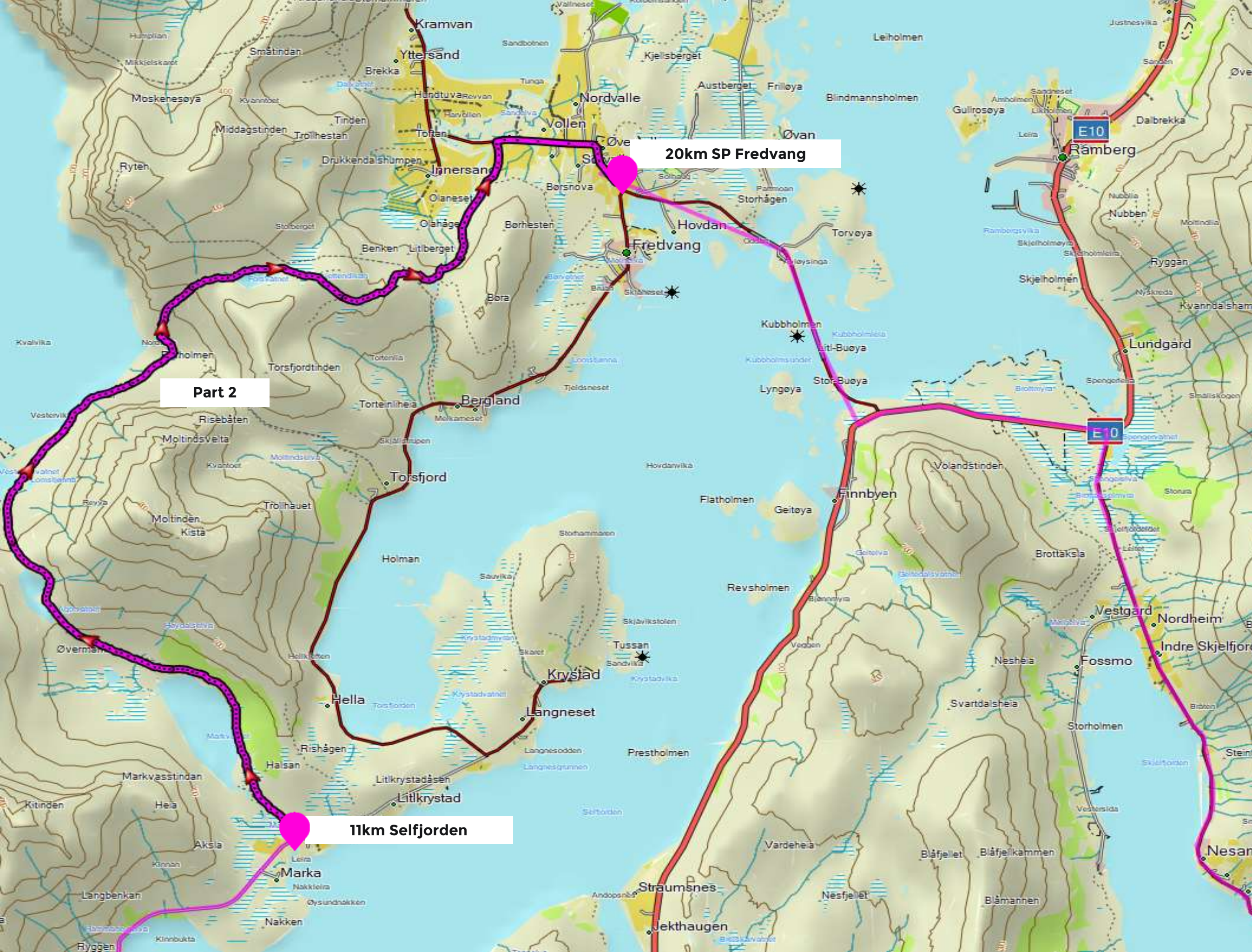
11km Selfjorden



THE ARCTIC TRIPLE

Stage 1

Selfjorden - Fredvang
Distance: 9 km
Elevation: 500 m



Part 2

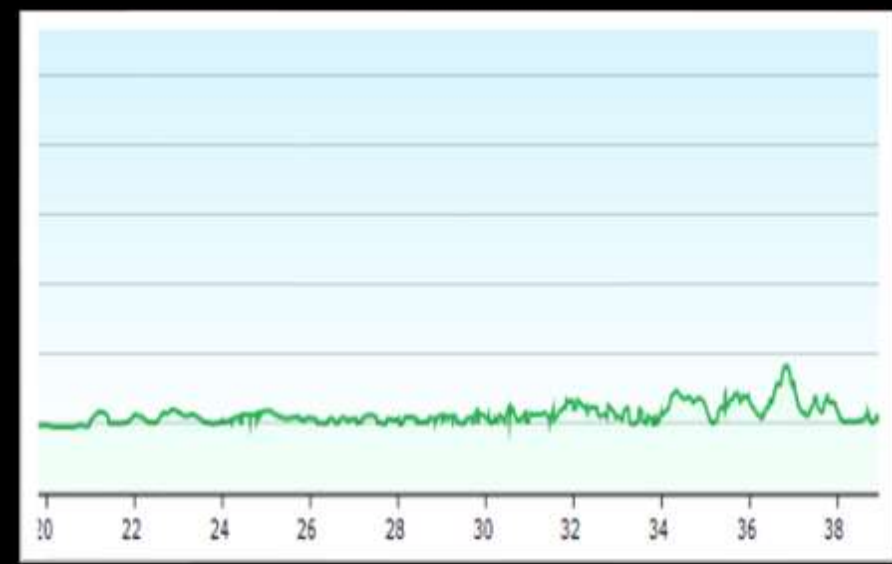


THE ARCTIC TRIPLE



Stage 1

Fredvang - Nusfjord
Distance: 19 km
Elevation: 350 m





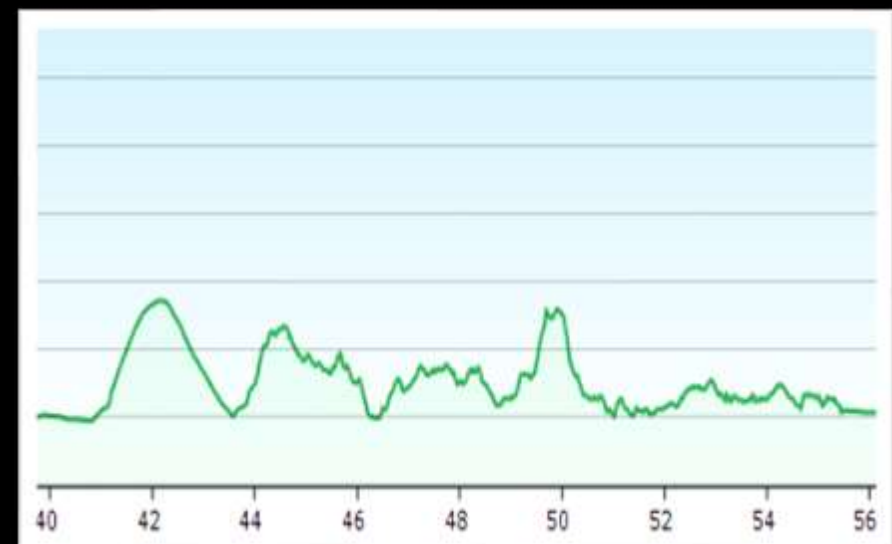
17(56)km SP Napp

Part 1

Start Stage 2 Nusfjord
34KM

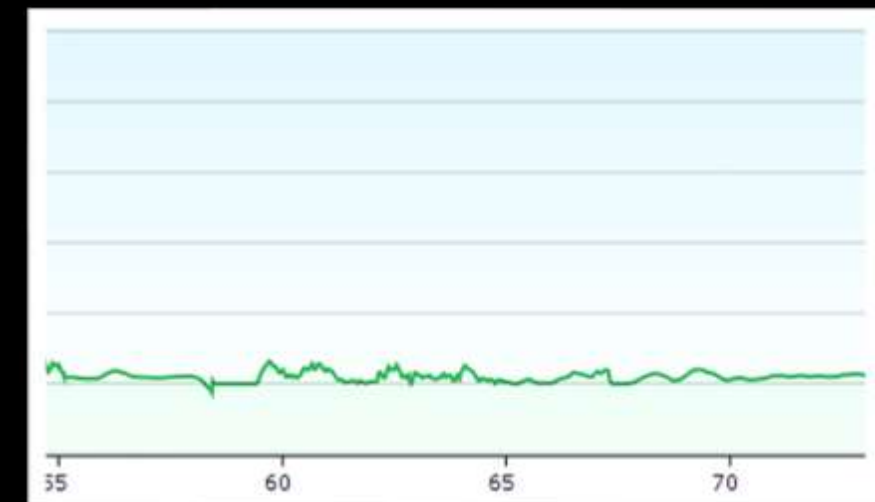
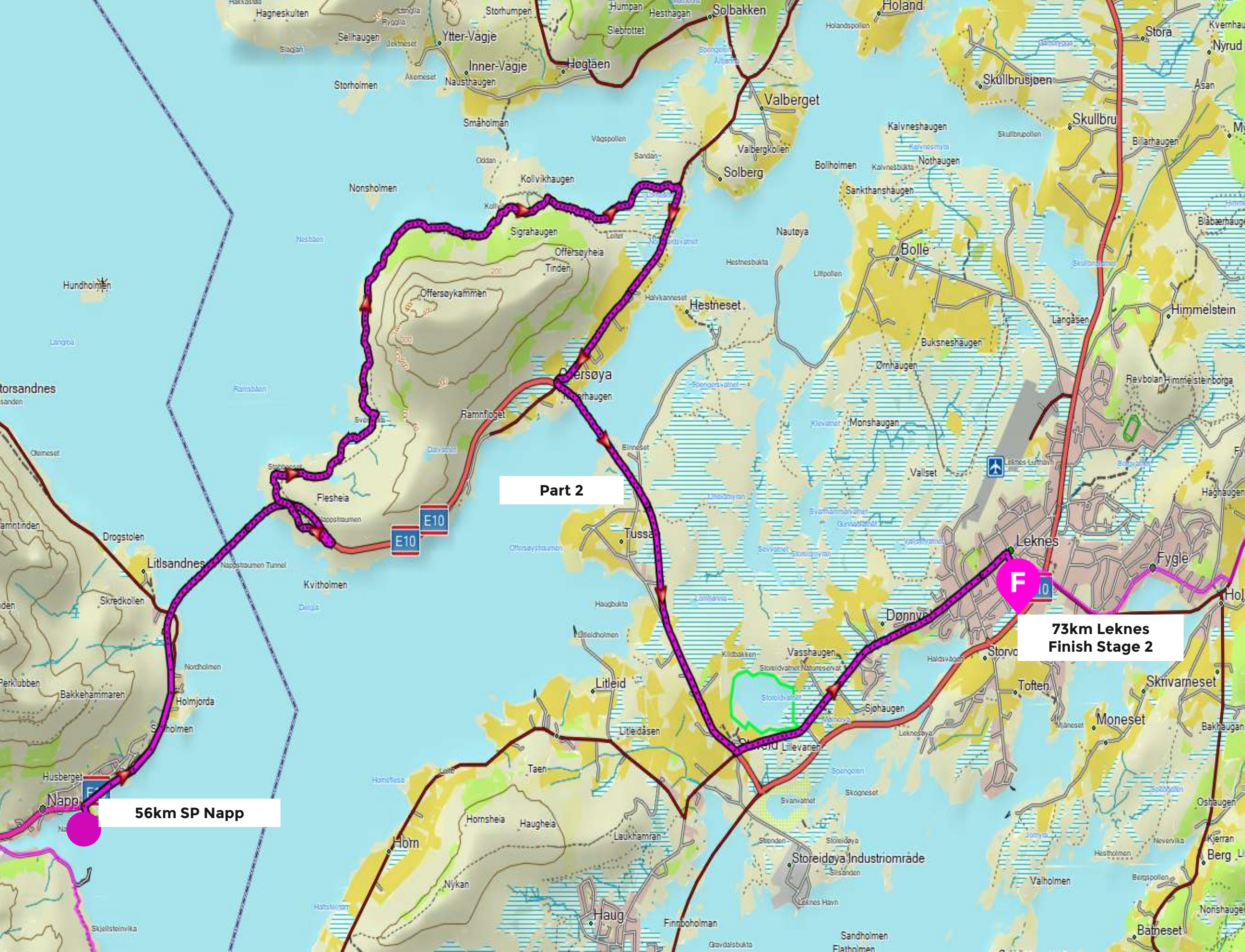
Stage 2

Nusfjord – Napp
Distance: 17 km
Elevation: 900 m

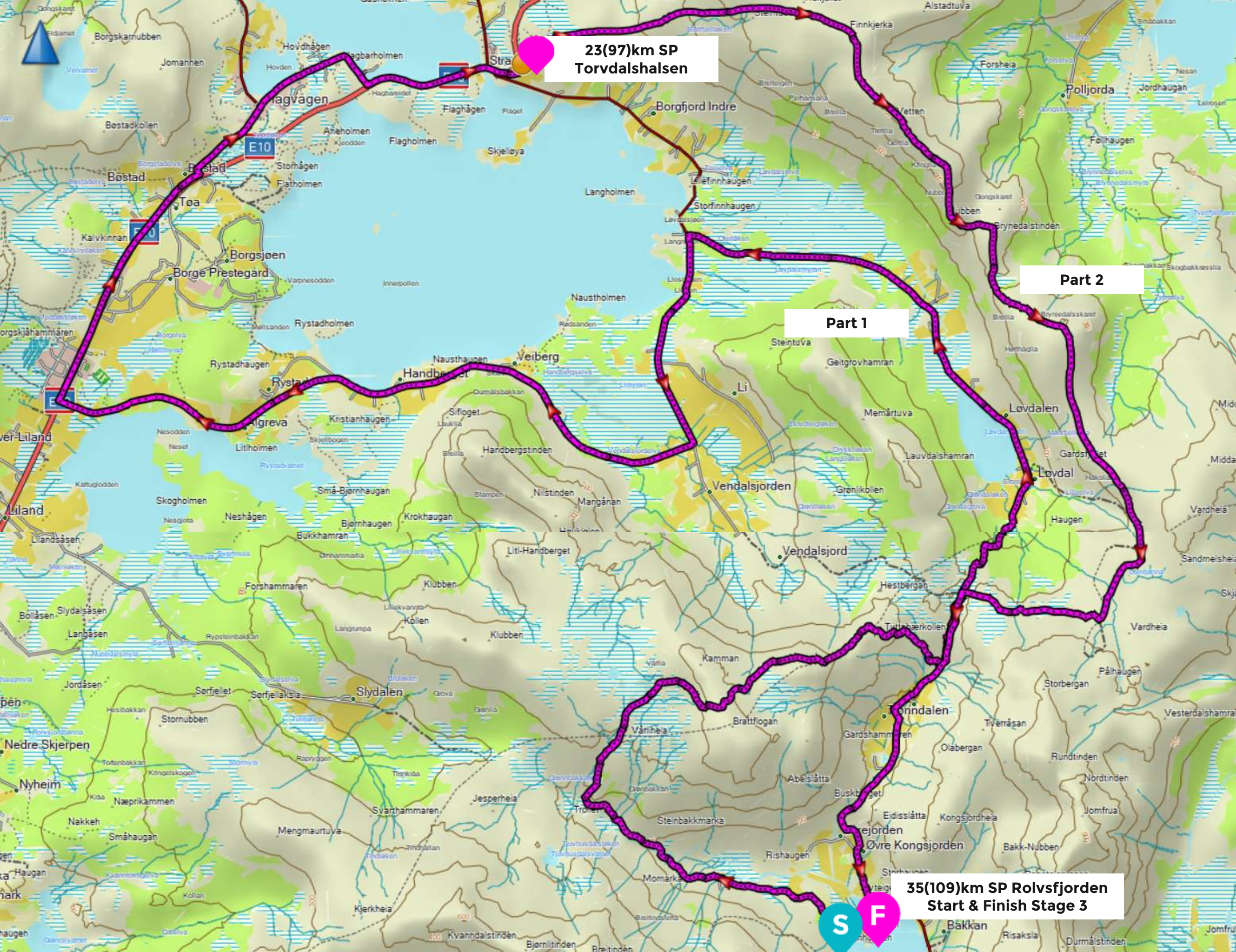


Stage 2

Napp - Leknes
Distance: 17 km
Elevation: 300 m



THE ARCTIC TRIPLE



**23(97)km SP
Torvdalshalsen**

Part 1

Part 2

**35(109)km SP Rølvfjorden
Start & Finish Stage 3**

Stage 3

**Rølvfjorden - Torvdalshalsen -
Rølvfjorden**
Distance: 23+12 km
Elevation: 800+700 m



THE ARCTIC TRIPLE



S
Start Stage 4
Kleppstad 21KM

14(124)km SP Kongsmarka

F
FINISH
130KM Stage Run
Lofoten, Svolvær

Stage 4

Kleppstad - Svolvær
Distance: 21 km
Elevation: 1150 m



THE ARCTIC TRIPLE